



MONTHLY MEMBERSHIP PROGRESS REPORT

District 318 A

Results as of: 12/31/2017

GMT: N S SANKAR

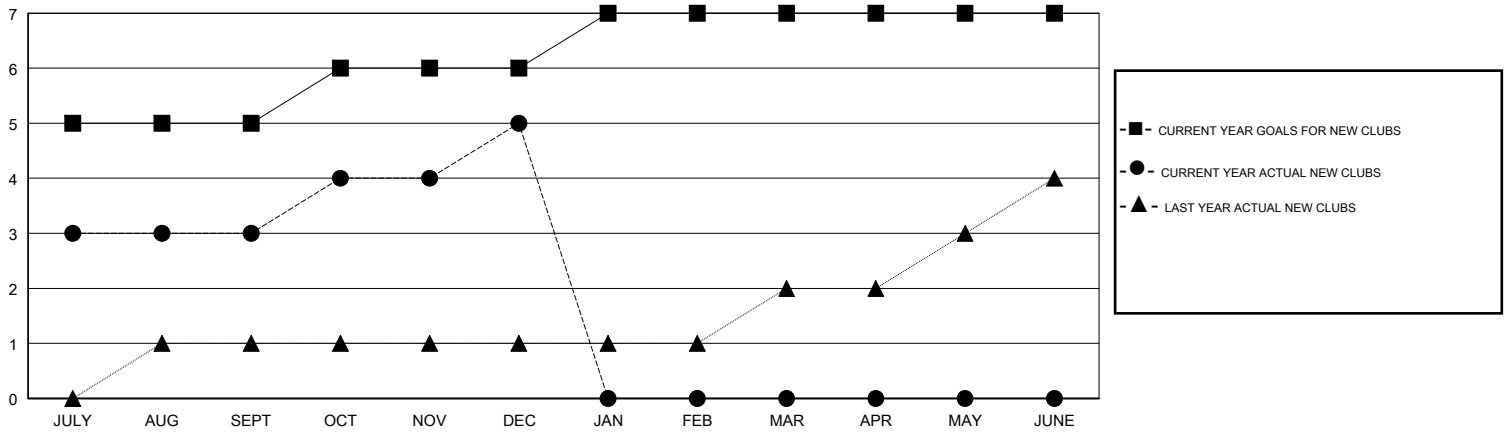
LOCATION INDIA

GMT CA

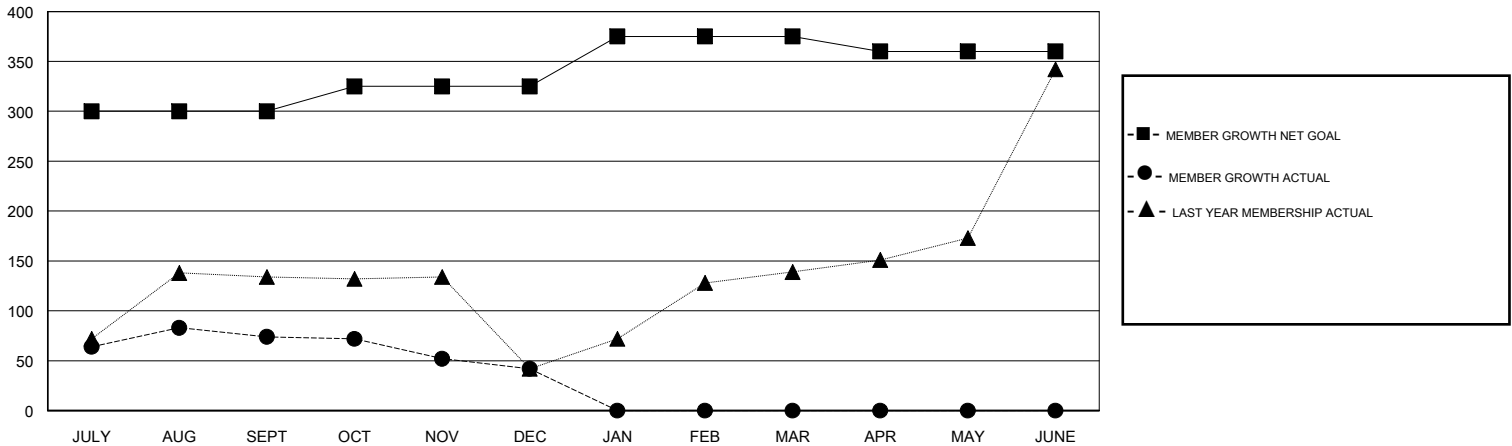
Clubs			
RESULTS FOR 2017-2018			
QUARTER	NEW CLUB GOAL	NEW CLUBS	DROPPED CLUBS
JULY/AUG/SEPT	5	3	0
OCT/NOV/DEC	1	2	3
JAN/FEB/MAR	1	0	0
APR/MAY/JUNE	0	0	0

Members			
RESULTS FOR 2017-2018			
QUARTER	MEMBER GROWTH NET GOAL	MEMBER GROWTH ACTUAL	DROPPED MEMBERS ACTUAL (including transfers)
JULY/AUG/SEPT	300	186	107
OCT/NOV/DEC	25	97	127
JAN/FEB/MAR	50	0	0
APR/MAY/JUNE	-15	0	0

GOALS AND ACTUAL NEW CLUBS CUMULATIVE



GOALS AND ACTUAL MEMBERS CUMULATIVE



DROPPED CLUBS: 3

49 CLUBS OF 119 ADDED 1 OR MORE NEW MEMBERS

GENDER DISTRIBUTION	
MALE	2,958 (83.09%)
FEMALE	602 (16.91%)
Women Percentage Fiscal Year Goal: 20%	

DROPPED MEMBERS	
DECEASED	8
CLUB CANCELLED	31
OTHER	195
TOTAL	234

[CLICK HERE FOR CUMULATIVE MEMBERSHIP DATA](#)

TOTAL FAMILY UNIT MEMBERS	1,021
FAMILY MEMBERS PAYING HALF DUES	527